

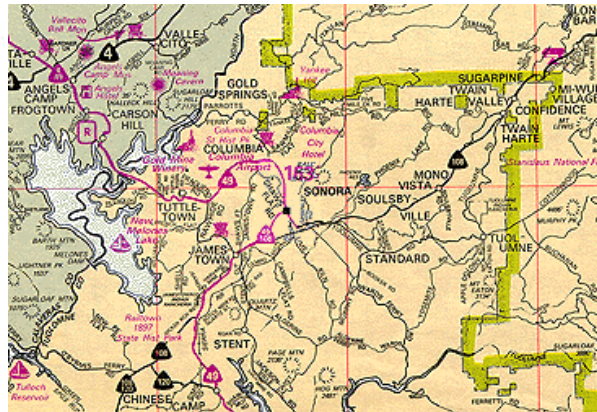
California Odd Fellows and Rebekah Youth Camp

THREE LINKS CAMP

21950 Highway 108
Mi-Wuk Village, CA 95346
Mail: P.O. Box 2115, Cameron Park, CA 95682-2115
A Non-Profit Corporation
John King, Camp Manager – 209-586-5500
Allen Merriman, Director – 707-275-2070 or 707-485-2817



Maps and Directions



From Sacramento and North

Go South on US 99 to CA 120, then go East to CA 108 through Jamestown. Continue on CA 108 about another 20 miles. At about 2 miles past Mi-Wuk Village, look for the Camp's white sign on the right side of the road as soon as you see the sign for Lyons Dam Road. Turn right and immediately take Three Links Road (gravel road is toward the left as soon as you turn). Go ½ mile to the Camp.

From Fresno and South

Go North on US 99 to Merced. Take "G" Street to the East end of Snelling. Take County Road J-59 to CA 108. Turn right to Jamestown, then continue on CA 108 about another 20 miles. At about 2 miles past Mi-Wuk Village, look for the Camp's white sign on the right side of the road as soon as you see the sign for Lyons Dam Road. Turn right and immediately take Three Links Road (gravel road is toward the left as soon as you turn). Go ½ mile to the Camp.

Rate Schedule - Effective July 1, 2010

• RV Spaces •

Over 40 RV spaces Most spaces have full hookups, and some can accommodate the larger RVs. Some spaces have no sewer line, but our convenient dump station is also available. Individuals or groups of RVs are welcome.

Cost per space: \$20/night for 1 or 2 persons
Extra persons: Adults – \$2 night/per person;
Children Under Age 12 – \$1 night/per person.

• Tent Sites •

Numerous unimproved tent sites are also available to individuals or groups. The number of people allowed per site may be limited at the discretion of the Camp Manager.

Cost per site: \$12/night for up to 4 persons
Extra persons: Adults – \$2/night per person;
Children Under Age 12 – \$1/night per person

• **Dormitories** •

Five dormitories (Dorms) handle groups of up to 108 people. Each Dorm has 10 or more single person bunks, two doublewide bunks, and a small restroom with toilet, sink and shower. According to the size of your group, one, two, some or all Dorms may be rented.

May 1 – September 30: \$12/night/per person or \$72/week per person
October 1 – April 30: \$15/night/per person or \$90/week per person
(A county bed tax is applied nightly per bed.)

• **Multipurpose Building** •

The Multipurpose building (as are other Camp building facilities) is available at an extra fee to groups staying at the Camp, or for day use. It serves as kitchen, dining room, indoor recreation room and Camp focal point.

The kitchen is outfitted with cooking and serving utensils, pots & pans, dishes, cups, glasses, flatware and related items. Commercial refrigeration and automated dishwasher are included.

A fireplace and hearth stretch across an entire wall, helping to make cold evenings pleasant with a fire. This building may be rented out to groups of up to about 150 for wedding receptions, meetings, family reunions, community group use, and other appropriate purposes.

Groups: May 1 – September 30: \$120/day
Groups: October 1 – April 30: \$150/day
Day Use: All Year: \$250 day

• **“Chapel in the Pines”** •

The Chapel can be rented to groups up to about 150 for weddings, church functions, and other appropriate uses.

Groups: All Year – \$25/day
Day Use: All Year – \$150/day

• **Amphitheater** •

The outdoor Amphitheater also seats about 150 people and provides the possibility of staging your own programs! A small changing room is incorporated at the back of the stage. Bring your own sound system to plug in to the power outlets and you will be ready to go! The nearby fire pit adds to the atmosphere when conditions permit.

Groups Only: \$25/day

• **Crafts Building** •

A Crafts building is available, and perfect for small groups to use for meetings, seminars, crafts or other appropriate purposes.

Groups Only: \$25/day.

• **Swimming Pool** •

The seasonal solar heated Swimming Pool is generally open to individual renters and groups, but may occasionally not be available due to special circumstances or events.

No additional charge

• **All Camp Facilities** •

Groups Only: All Year – may rent All Camp Facilities for a cost of \$175/day (RV/Tent spaces and Dorm Beds are available at additional charges).